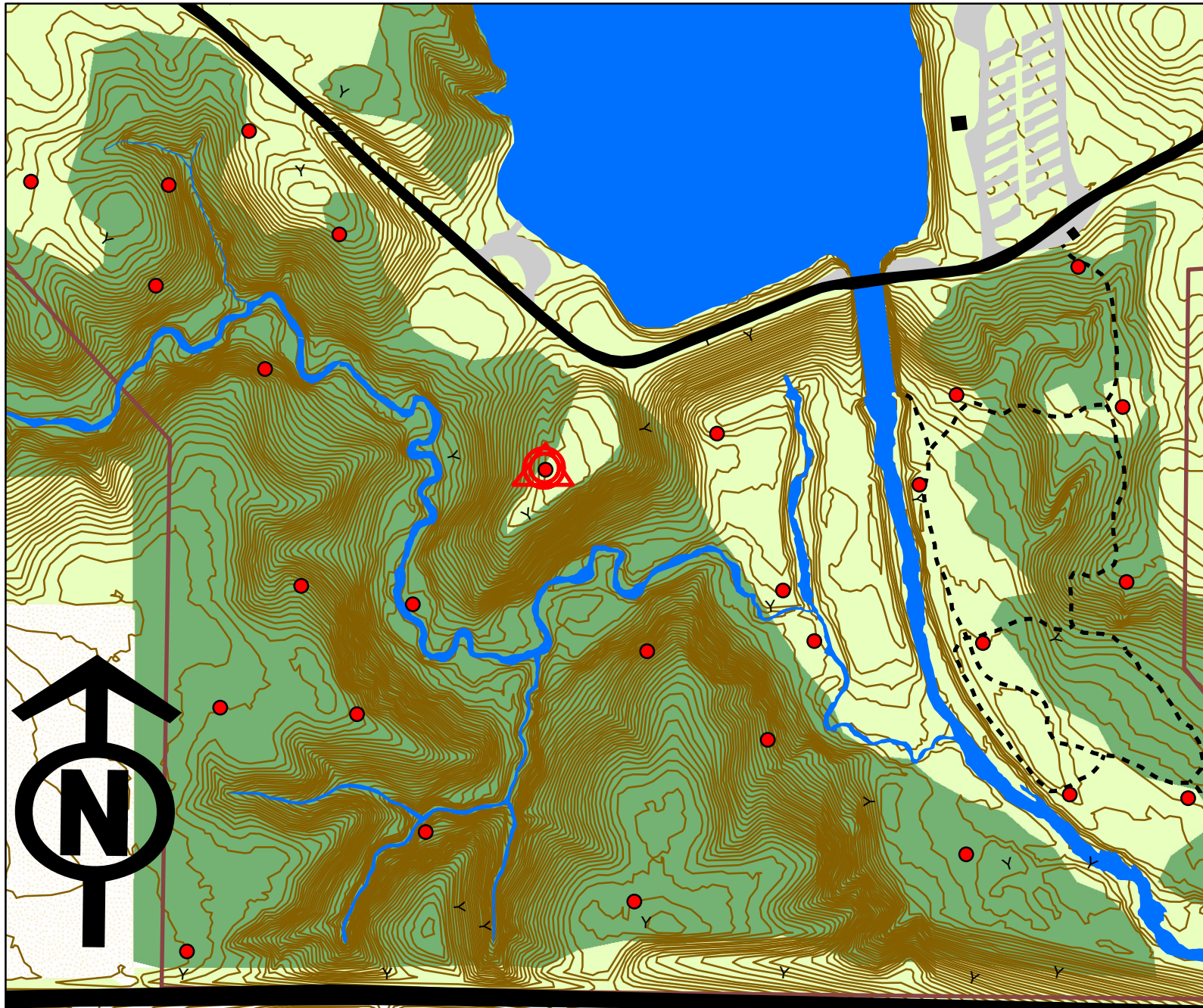


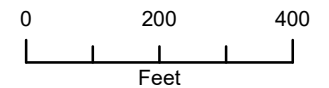


Don Williams Recreation Area Orienteering Course



Legend

- Waypoint marker
- ▬ roads - paved
- ▬ buildings
- ▬ roads - gravel
- ▬ lakes/streams
- - - trails
- ▬ park border
- ▬ contours (2ft CI)
- ▨ Cultivated Land
- ▬ Sparse Trees
- ▬ Dense Forrest



Score Orienteering Course

Try to find as many markers as possible during the time limit (20 minunets suggested)

The further the marker is away from the start the more points its worth (1-3 Points)

One point taken off every minunet late

(only markers west of spillway creek)